

FLIGHT SIMULATOR FIRST OFFICER (FSFO)

WHAT's FSFO?

Flight Simulator First Officer is a generic virtual copilot that can be used with any aircraft. The primary function of FSFO is to assist the Pilot In Command (PIC) to fly the aircraft safely while adhering to Standard Operating Procedures (SOPs). This is accomplished via virtual checklist and sharing of cockpit duties/responsibilities. Specifically, the First Officer reads the following configurable checklist:

- Before Start
- After Start
- Before Takeoff
- In-Range
- After Landing
- Shutdown

After reading the checklist item, the Copilot will wait to ensure you (i.e. the pilot) have configured the aircraft correctly before proceeding to the next item. Also, the Virtual copilot is capable of performing the following actions:

1. Call Vsports based on your input
2. Raise the Landing Gear on Takeoff
3. Retract the Flaps
4. Manage the taxi/landing lights
5. Land the Aircraft
6. Tune the ILS frequencies
7. Call Climb Power based on your input
8. Reset Vertical Speed when the Aircraft is within 1000 ft of the programmed altitude
9. IAS warning (e.g. Aircraft is above 250 IAS while below 10000 ft)
10. GS Warnings (e.g. Aircraft is above 25 knots while taxiing)
11. Resets the altimeter to standards when passing TA
12. Engage Heading Hold on Takeoff
13. Engage Altitude Hold on Takeoff
14. Reset Speed on Takeoff
15. Engage Speed Hold on Takeoff
16. Engages Rev Thrust on Landing
17. Ground Proximity Warning System (GPWS)
18. Plus much more....

GETTING STARTED

1. Configure a user profile (USER PROFILE)
2. Configure an aircraft profile (AIRCRAFT PROFILE)
3. Enter a valid "FROM" and "TO" ICOA Code (FSFO – CHECKLIST TAB)
4. Select valid departure and destination runways via combo boxes (FSFO – CHECKLIST TAB)
5. Select an Aircraft Profile by clicking the select button (FSFO – CHECKLIST TAB)
6. Click the connect button (FSFO – CHECKLIST TAB)
7. When ready, click the "Before Start" button to initiate the before start checklist
 - a. If using "Automatic Mode," all other checklist are initiated automatically, with the exception of the shutdown checklist (AIRCRAFT PROFILE)
 - b. If in manual mode, the checklist must be initiated by clicking the appropriate button (AIRCRAFT PROFILE).

FSFO – CHECKLIST TAB

The screenshot shows the 'Flight Simulator First Officer' window with the 'Checklist' tab selected. The interface includes a menu bar with 'File', 'Options', and 'Help'. Below the menu bar are tabs for 'Chk', 'Brf', 'Eng', 'Sys', 'Data', 'Log', and 'Add'. The 'Mandatory' section contains 'From' and 'To' fields, each with a green background and a dropdown menu. The 'Checklist - Automatic Mode' section contains eight buttons: 'Before Start', 'Approach', 'After Start', 'After Landing', 'Before TakeOff', 'Shut Down', 'TakeOff', and 'Pause Checklist'. The 'Aircraft Profile' section contains a text box with '757_QW' and a 'Select' button. The status bar at the bottom shows 'Connected', 'Before Start', '11:56 AM', and 'Exit'.

Form – Enter the departure ICAO code. If the code is valid, the textbox will change from red to green and the corresponding combo box will be populated with the available runways. The “From” field must be entered correctly to connect FSFO to your Flight Sim. The correct runway must also be selected for the automated checklist option to function.

To – Enter the destination ICAO code. If the code is valid, the textbox will change from red to green and the corresponding combo box will be populated with the available runways. The “To” field must be entered correctly to connect FSFO to your Flight Sim. The correct runway must also be selected for the automated checklist option to function.

Checklist – Click the button to initiate the checklist; specific parameters must be met to start a checklist (i.e. you cannot initiate the before start checklist while airborne or if the engines are already started). Only one checklist can be initiated at a time. You can pause a checklist by clicking the pause button. ***TO BYPASS A CHECKLIST ITEM, HOLD THE CTRL KEY. This action maybe necessary on some complex third party aircraft; FSFO may not be able to read some aircraft parameters.***

Aircraft Profile – Select the desired aircraft profile by selecting the “select” button. The profiles are stored in *\\FlightSimulatorFirstOfficer\\Aircraft directory.

Connect – Press to connect FSFO to your Flight Simulator. If the connection is successful, the button will change color from red to green and the words “connected” will appear.

Exit – Press to close FSFO.

FSFO – BRIEFING TAB



V1 – If entered, the Copilot will call “V1” once the aircraft exceeds this speed on the takeoff roll.

VR – If entered, the Copilot will call “VR” once the aircraft exceeds this speed on the takeoff roll.

V2 – If entered, the Copilot will call “V2” once the aircraft exceeds this speed on the takeoff roll.

Flaps – Available aircraft flap settings as read from the aircraft profile; this must be accurate to achieve precise flap retraction (AIRCRAFT PROFILE).

Flaps 2 – If entered, the Copilot will retract the flaps to the “second” flaps position once the aircraft exceeds the inputted speed.

Flaps 1 – If entered, the Copilot will retract the flaps to the “first” flaps position once the aircraft exceeds the inputted speed.

Flaps 0 – If entered, the Copilot will retract the flaps to zero once the aircraft exceeds the inputted speed.

Mng – If entered, the Copilot will turn on the taxi/landing lights once the aircraft is below this altitude and turn them off when above it.

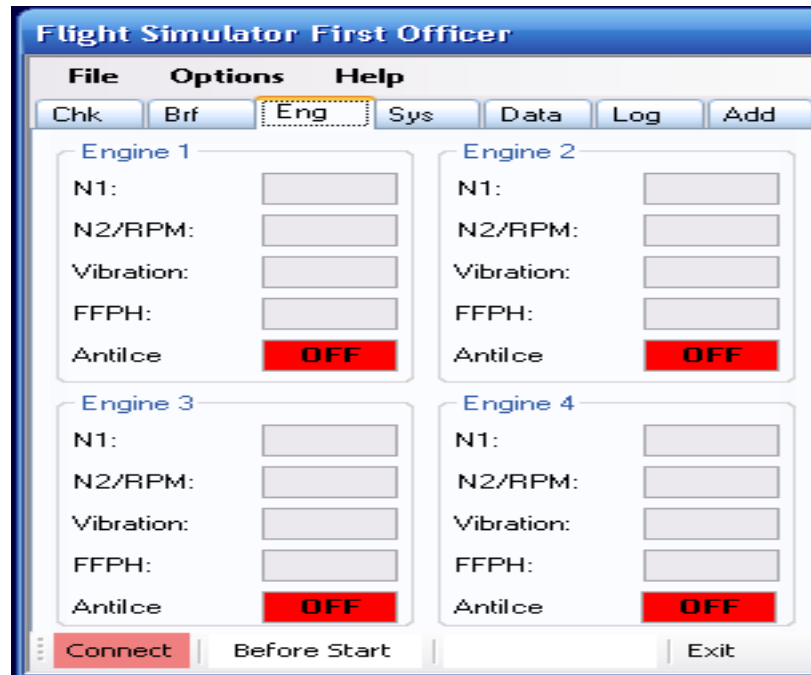
Pause – If entered, FSFO will pause the simulator when the aircraft reaches the entered nautical miles.

AutoLand – if checked, FSFO will land the aircraft.

Dispatch Messages – If dispatch messages are enabled, they are displayed here.

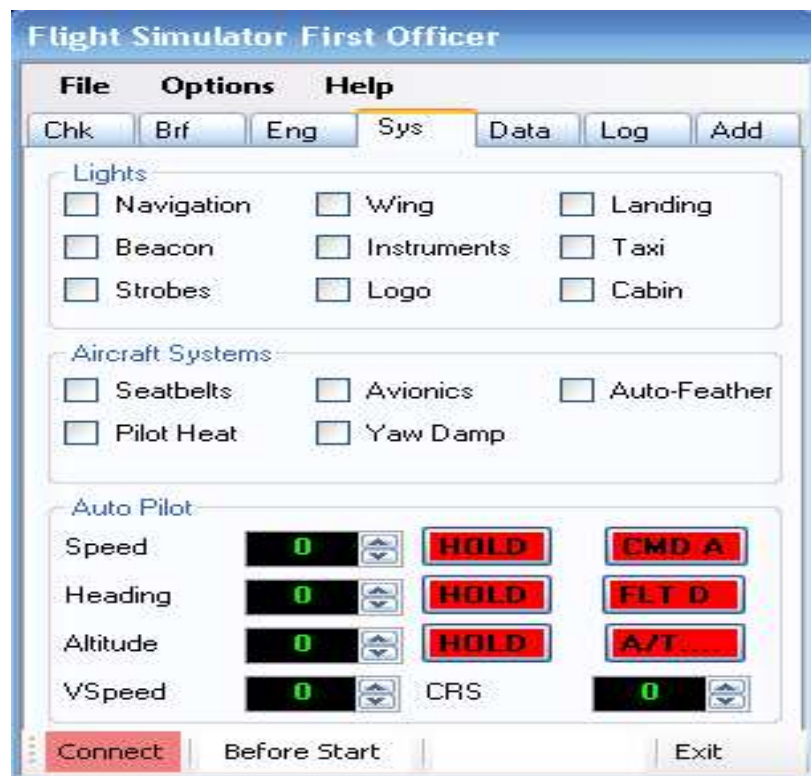
- You can turn the dispatch system on/off via the **Options > Aircraft Systems > Dispatch** menu
- Request the latest METARS/PIREPS via the **Options > Aircraft Systems > Dispatch > Wx Report** menu

FSFO – ENGINE TAB



When connected to Flight Simulator, engine data is displayed on this tab.

FSFO – SYSTEM TAB



When connected to Flight Simulator, you can manipulate (i.e. turn of/off) aircraft systems via this tab. You can also configure your autopilot settings, if FSFO has the ability to “read” the aircraft parameters. Aircraft systems can also be manipulated via the **Options > Aircraft Systems > Flight Sim Sys** menu. Some of these features will not be available on some third-party aircraft.

FSFO – DATA TAB



The Data tab contains Airport/Runway information relating to the destination and departure Airports. Also, this tab depicts your flight progress and current location.

FSFO – LOG TAB

Flight Simulator First Officer

File Options Help

Chk Brf Eng Sys Data **Log** Add

BlackBox Data

Acft IAS:	0	Bank:	0
Grnd Spd	0	Pitch:	0
Acft Alt:	0	Heading:	0
Grnd Alt:	0	Rdr Alt (ASL)	0
Vspd:	0	Rdr Alt (MSL)	0

Log Book

Acft Weight	0	Acft Max Wt	0
Acft DEW	0	Avail Wt	0
Fuel Weight	0	Est End Fuel	0
TO Time	0	TO Speed	0
Lnding Time	0	Lnding VSpd	0

Connect Before Start Exit

When connected to Flight Simulator, blackbox and log book data is displayed here.

USER PROFILE

User Profile allows you to set global configuration options for each aircraft and consolidate your flight simulator third party add-ons.

From the FSFO main screen, select **Options > Open > User Profile**.



User Profile

Options

☒ **Enable Dispatch Messages** Set AP 1200 AGL Bank Angle 30 Deg **Save**

☐ Simulate Runway Contamination Disconnect AP 500 AGL GS Warn 25 KNTS

☒ CoPilot Handles Ice Protection Disconnect AT 100 AGL Checklist Delay 1000 1000 = 1sec

☒ CoPilot Handles Seatbelts

Directory C:\Documents and Settings\Matt\My Documents\Visual Studio 2010\Projects\FlightSimProjects\FlightSimulatorFirstOfficer\FlightSimulatorFirst

Wx Source

Hifi Wx C:\Users\SDC_Admin\AppData\Roaming\HIFIVAS2012\current_wx_snapshot.txt **browse**

Addon Manager

	Name	Path to addon *.exe	
Addon 1	AS2012	C:\Program Files\HIFIVAS2012\AS2012_Exec.exe	browse
Addon 2	RC4	C:\Program Files\rcv4x\rcv4.exe	browse
Addon 3	VAFS5	C:\FSX\VAFS5\VAFS5.exe	browse
Addon 4			browse
Addon 5			browse
Addon 6			browse
Addon 7			browse
Addon 8			browse

- **Enable Dispatch Messages** – Dispatch reports will be sent to FSFO; they will appear on the “Brf” tab. When a message is received, a “ding” will be played.
- **Simulate Runway Contamination*** – Reduces the braking effect of the aircraft when the runway is contaminated with rain, snow, or sleet.
- **Copilot Handles Ice Protection*** – Copilot will turn Ice protection on/off based on atmospheric conditions.
- **Copilot Handles Ice Protection*** – Copilot will turn seatbelt signs on/off based on turbulence and/or flight phase
- **Set AP** – If selected via the Aircraft Profile, the Copilot will engage the master pilot once the aircraft passes this altitude on takeoff.
- **Disconnect AP** – If selected via the Aircraft Profile, the Copilot will disengage the master pilot once the aircraft passes this altitude on landing.
- **Disconnect AT** – If selected via the Aircraft Profile, the Copilot will disengage the auto-throttle once the aircraft passes this altitude on landing.
- **Bank Angle** – If selected via the Aircraft Profile, master setting for bank angle warning.
- **Warn GS** – If selected via the Aircraft Profile, master setting for ground speed warning.
- **Checklist Delays** – represents the time between checklist call and response. Ex. if you select 1000, 1 second will pass between the Copilot Call and the Pilots response.

- **Directory** – Flight Simulator First Officer main directory.
- **HiFi Wx** – If using a HiFi weather product (e.g. AS2012, ASX , or ASE), identify the path the weather snap shot text file. If the path is valid, FSFO dispatch manager will obtain the weather data from this file.
- **Addon Manager** – List the name and path to any third party software you would like to launch via FSFO. Once the user profile is saved and FSFO is restarted, the programs can be launched by clicking the corresponding button on FSFO's Add tab:

The screenshot displays the Flight Simulator First Officer (FSFO) application window. The 'Add' tab is selected, showing configuration options for addons and weather data.

Flight Simulator First Officer

File Options Help

Chk Bfr Eng Sys Data Log **Add**

AS2012 RC4

VAFS5

Connect Before Start Exit

☒ CoPilot Handles Ice Protection Disconnect AT 100 AGL Checklist Delay 1000 1000 = 1sec

☒ CoPilot Handles Seatbelts

Directory C:\Documents and Settings\Matt\My Documents\Visual Studio 2010\Projects\FlightSimProjects\FlightSimulatorFirstOfficer\FlightSimulatorFirst

Wx Source

HiFi Wx C:\Users\SDC_Admin\AppData\Roaming\HiFi\AS2012\current_wx_snapshot.txt browse

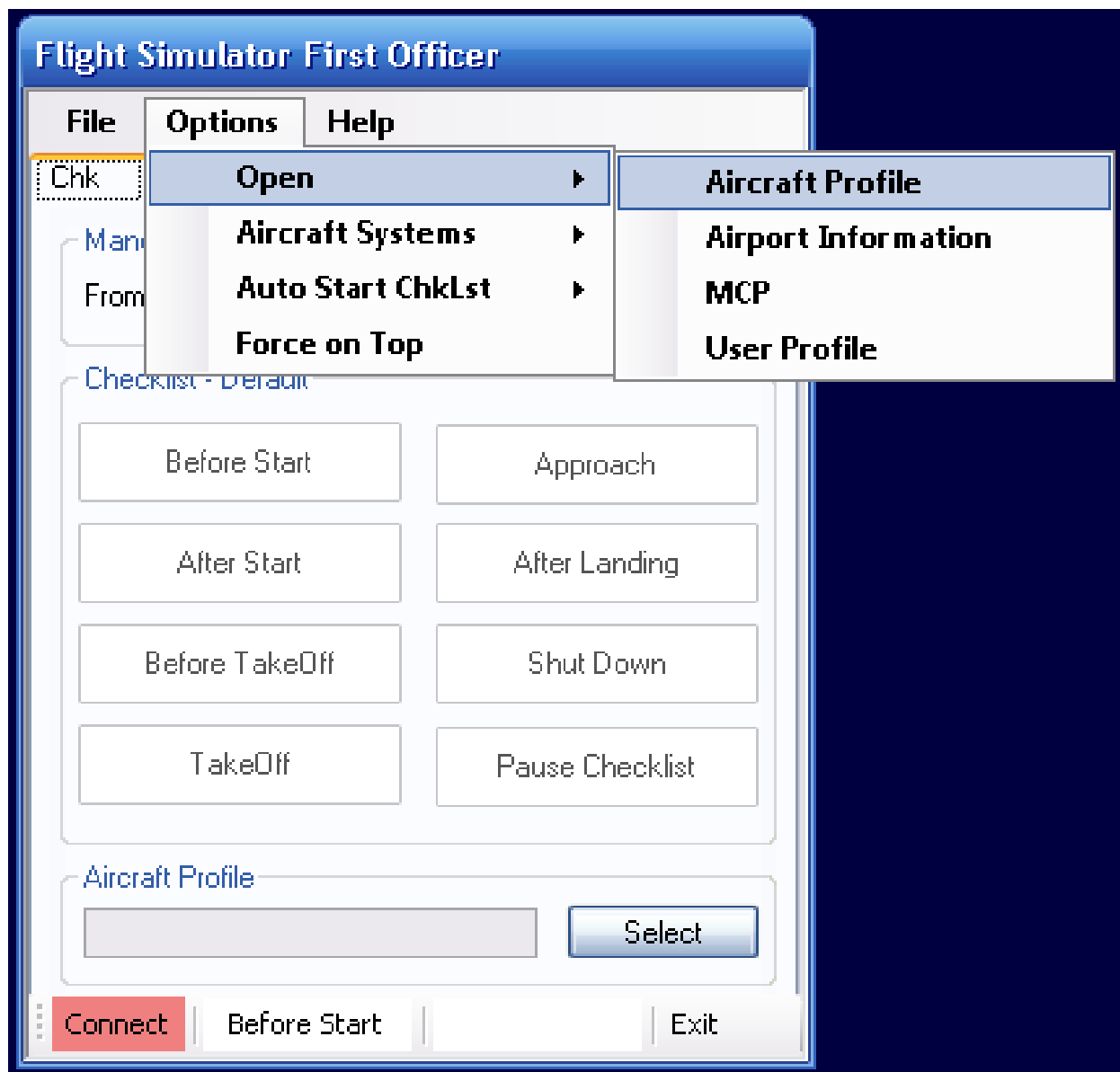
Addon Manager

	Name	Path to addon *.exe	
Addon 1	AS2012	C:\Program Files\HiFi\AS2012\AS2012_Exec.exe	browse
Addon 2	RC4	C:\Program Files\vcv4\vcv4.exe	browse
Addon 3	VAFS5	C:\FSX\VAFS5\VAFS5.exe	browse
Addon 4			browse
Addon 5			browse
Addon 6			browse
Addon 7			browse
Addon 8			browse

AIRCRAFT PROFILE

Aircraft Profiles allow you to select specific checklist and virtual copilot options for every aircraft in your virtual fleet.

From the FSFO main screen, select **Options > Open > Aircraft Profile**.



Aircraft Profile

Profile Name: **757_QW**

Called Before/After Chklist

<input checked="" type="checkbox"/> Main Battery	<input checked="" type="checkbox"/> Fuel QTY
<input type="checkbox"/> Gen Ctrl Switches (2)	<input checked="" type="checkbox"/> Doors
<input checked="" type="checkbox"/> APU (2)	<input checked="" type="checkbox"/> Flight Recorder
<input checked="" type="checkbox"/> Nav lights	After Start
<input checked="" type="checkbox"/> Spoilers	<input checked="" type="checkbox"/> Eng Anti-Ice (CS)
<input type="checkbox"/> Speed Brakes	<input checked="" type="checkbox"/> Flight Director
<input type="checkbox"/> Propeller*	<input checked="" type="checkbox"/> MCP
<input type="checkbox"/> Fuel Lever*	<input type="checkbox"/> Auto Pilot
<input type="checkbox"/> Fuel Control Switches	<input type="checkbox"/> AirSpd Bugs
<input type="checkbox"/> Yaw Damp	<input type="checkbox"/> Auto Feather*
<input checked="" type="checkbox"/> Elec Power	<input checked="" type="checkbox"/> Trim
<input checked="" type="checkbox"/> Hydraulics	<input checked="" type="checkbox"/> AutoBrakes
<input checked="" type="checkbox"/> Fuel Panel	<input checked="" type="checkbox"/> Flight Ctrls
<input checked="" type="checkbox"/> Probe Heat	<input checked="" type="checkbox"/> Taxi Lights
<input checked="" type="checkbox"/> SeatBelt/Smoking	<input checked="" type="checkbox"/> Transponder
<input checked="" type="checkbox"/> PAX (2)	Color Code
<input checked="" type="checkbox"/> ISO Valve (2)	<input type="checkbox"/> Interactive
<input type="checkbox"/> Eqpmt Cooling Switch	<input checked="" type="checkbox"/> FO Call Only
<input checked="" type="checkbox"/> Beacon Lights	<input type="checkbox"/> FO Performs Action
<input checked="" type="checkbox"/> FMC	

(2) = Before and After Start Checklist * = TurboProp Only

Before TakeOff

- ☒ FlightAttendant
- ☒ Radar
- ☐ Props*
- ☒ Auto Throttle
- ☒ Landing Lights
- ☒ Strobe Lights

Shutdown

- ☐ Fuel Lever*
- ☒ Fuel CutOff
- ☒ Anti-Ice
- ☒ Beacon Lights
- ☒ SeatBelt/Smoking

Options

Select Aircraft

Save

Delete

Generate Checklist

In-Range

- ☒ SeatBelt
- ☒ Arm Spoilers
- ☐ Propeller*
- ☒ AutoBrakes

After Landing

- ☒ Landing Lights
- ☒ Strobe Lights
- ☒ Flaps
- ☒ Spoilers
- ☒ Radar
- ☒ APU

Virtual Copilot Options

- ☒ Altitude Alert
- ☐ Reset VS to 1000
- ☐ Bank Angle Warn
- ☒ GS Warning
- ☒ Warn if IAS is above 250
- ☒ Manage Altimeter
- ☒ Manage Acft hdg
- ☐ Est power during pre-flight
- ☒ Raise Gear on Takeoff
- ☐ Set Hdg 500 ft
- ☐ Set Alt 800 ft
- ☐ Set Spd 1000 ft
- ☐ Set AP
- ☐ Reset AutoBrakes
- ☒ Tune ILS
- ☐ Set AutoBrakes
- ☐ Rest AP
- ☐ Disconnect AP
- ☐ Disconnect AT
- ☒ Engage Rev Thrust
- ☒ Rev Idle (80 kts)
- ☐ GPWS
- ☐ Call 80 kts
- ☐ ILS Calls
- ☒ Auto Start Chklist

1 ☐ 10 ☐ 35
2 ☐ 15 ☒ 40
3 ☐ 20 ☐ 45
4 ☐ 25 ☐ 50
5 ☒ 30

Types of Checklist Calls

- **Interactive** – Copilot will call the checklist item and wait for the parameter to be set correctly before moving to the next item.
 - Ex. Copilot calls “Main Battery” during the “before start” checklist and waits for the Pilot to turn the main battery on. Once activated, the copilot calls “set” and moves to the next item. If the item is not set correctly, the following message will appear on your Flight Simulator screen: “Main Battery.....ON”.
- **Call Only** – Copilot calls the checklist item and moves to the next item.
 - Ex. Copilot calls “Hydraulics” and the Pilot returns “Set,” without regards to Flight Simulators internal settings. The delay time between “call” and “response” is set via the *User Profile* settings.
- **First Officer (FO) action** – First Officer will call the checklist item, and set it to the correct setting.
 - Ex. Copilot calls “APU” and then sets the APU to start and the APU generator to on, or off, depending on the checklist.
- * = TurboProp only
- (2) = Called during before and after start checklist.

Checklist Options

Before Start

- **Main Battery** – interactive call, checks to see if the main battery is ON
- **Generator Control Switches** – FO action turns generator control switches to the OFF position.
 - Calls ON during After Start Checklist
- **APU** – FO actions, turn APU to start position and activates the APU generator.
 - Turns Off during After Start Checklist
- **Nav Lights** – interactive call, checks to ensure the navigation light is in the on position.
- **Spoilers** - interactive call, checks to ensure the spoilers are not deployed
- **Speedbrakes** - interactive call, checks to ensure the speed brakes are not deployed
- **Propellers** - interactive call, checks to ensure the propellers are feathered (turboprop only).
- **Fuel Levers** – interactive call, checks to ensure the Fuel Levers are Idle (turboprop only).
- **Yaw Damp** - interactive call, checks to ensure Yaw Damp is engaged.
- **Electrical Power** – Call only, Copilot calls Electrical Power, Pilot replies “Set.”
- **Hydraulics** – Call only, Copilot calls Hydraulics, Pilot replies “Set.”
- **Fuel Pumps** - Call only, Copilot calls Hydraulics, Pilot replies “Set.”
- **Probe Heat** - interactive call, Copilot checks to ensure the probe heat is turned on.
- **Seatbelt/No Smoking** – FO action, Copilot calls “Seatbelt and No Smoking signs.”
 - Copilot turns seatbelt and no smoking signs to “ON.”
- **Paxs** – Call only, Copilot call “PAXs”, Pilot replies “ON.”
 - Calls Off during After Start Checklist.
- **Isolation Valves** – Call only, Copilot Calls “Isolation Valve,” Pilot call “ON”
 - Calls “OFF” during After Start Checklist
- **ATIS** – Call only, Copilot Calls “ATIS,” Pilot call “OBTAINED.”
- **Altimeter** - Call only, Copilot Calls “Altimeter,” Pilot call “SET.”
- **Beacon Lights** - interactive call, Copilot checks to ensure the beacon lights are turned on.
- **FMC**- Call only, Copilot Calls “FMC,” Pilot call “SET.”
- **Fuel QTY** – interactive call, Copilot checks to ensure the aircraft weight does not exceed the Aircraft’s max takeoff weight. If it does, the Copilot will inform the captain to verify the load-sheet.
- **Doors** – interactive call, Copilot ensures the doors are closed
- **Flight Recorder** – Call only, Copilot call “Flight Recorder,” Captain replies “Set.”
 - Use this call as a reminder to set your virtual airliners ACARS device.

Note: The following interactive checklist items are called during the Before Start checklist; these are mandatory calls and do not appear on the Aircraft Profile option screen:

- **Landing Gear** – interactive call, Copilot checks to ensure the Landing-gear is in the Down positions.
- **Flaps** - interactive call, Copilot checks to ensure the Flaps are not deployed.
- **Parking Brake** - interactive call, Copilot checks to ensure the Parking Brake is engaged.
- **Throttle** = interactive call, Copilot checks to ensure the Throttle is in the idle position.

After Start

- **Engine Anti-Ice** – interactive call, Copilot will call the current Flight Simulator setting.
- **Flight Director** – interactive call, Copilot ensures the flight director is engaged.
- **MCP** - interactive call, Copilot ensures the autopilot heading, altitude, and speeds are set.
 - Auto Pilot Heading cannot equal 000.
 - Auto Pilot Altitude cannot equal 0000.
 - Auto Pilot Speed cannot equal 000.
- **Autopilot** – interactive call, same as MCP, excepts the Copilot calls “Auto Pilot” versus “MCP”
- **Airspeed Bug** - interactive call, Copilot ensures the speed-bug does not equal zero.
- **Auto Feather** - interactive call, Copilot ensures the Auto Feather is engaged.
- **Trim** - interactive call, Copilot ensures the trim does not equal zero.
- **Auto Brakes** - interactive call, Copilot ensures the Auto Brakes are set to “RTO.”
- **Flight Controls** - interactive call, Pilot moves the yoke forward, backwards, left, and right.
- **Taxi Lights** - interactive call, Copilot ensures taxi lights are turned ON.
- **Transponder** – interactive call, Copilot ensures transponder does not equal 1200.

Before Takeoff

- **Flight Attendant** – Call only, Copilot calls “Flight Attendant,” Pilot replies “Notified.”
- **Radar** – Call only, Copilot calls “Radar,” Pilot replies “Set”
 - If your plane is equipped with TCAS/WX Radar, set it now.
- **Props** – interactive call, Copilot ensures Props are set to “High RPM.”
- **Auto Throttle** – interactive call, Copilot ensures the Auto Throttle is engaged.
- **Landing Lights** – interactive call, Copilot ensures the Landing Lights are in the ON position
- **Strobe Lights** – interactive call, Copilot ensures the Strobe Lights are in the ON position.

After Takeoff (Mandatory Calls)

- **Landing Gear** – interactive call, Copilot ensures the Landing Gear is in the UP position.
- **Flaps** – interactive call, Copilot ensures the Flaps are Retracted,

In-Range

- **Altimeter** – call only, copilot call “Altimeter,” Pilot calls “Set.”
- **Seatbelt** – FO action, Copilot sets seatbelts sign to ON.
- **Arm Spoiler** – FO action, Copilot Arms the spoilers.
- **Propellers** – interactive call, Copilot ensures propellers are set to “HIGH RPM.”
- **AutoBrakes** – interactive call, Copilot ensures the Auto Brakes are set to LO, MED, or HIGH.

After Landing

- **Landing Lights** – interactive call, Copilot ensures the Landing Lights are in the OFF position
- **Strobe Lights** – interactive call, Copilot ensures the Strobe Lights are in the OFF position.
- **Flaps** – FO action, Copilot retracts the Flaps.
- **Spoilers** – FO action, Copilot retracts the spoilers
- **APU** – FO actions, turn APU to start position and activates the APU generator.
- **Radar** – Call only, Copilot calls “Radar,” Pilot replies “Set”
 - If your plane is equipped with TCAS/WX Radar, turn the OFF.

Shutdown

- **Fuel Lever** – interactive call, Copilot ensures the Fuel Lever is in OFF position
- **Fuel Cutoff** – FO actions, Copilot turns the fuel control switches to OFF.
- **Engine Anti-** FO actions, Copilot turns engine Anti-Ice to OFF.
- **Beacon Lights** - interactive call, Copilot checks to ensure the beacon lights are turned OFF.
- **Seatbelt** – FO action, Copilot sets seatbelts sign to OFF.

TO BYPASS A CHECKLIST ITEM, HOLD THE CTRL KEY. This action maybe necessary on some complex third party aircraft; FSFO may not be able to read some parameters.

Virtual Copilot

Altitude Alert – Audible “beep-beep-beep” is heard when the aircraft is within 1000 feet of the programmed altitude

Reset VS to 1000 – Copilot resets the vertical speed to 1000, or -1000, when the aircraft is within 1000 feet of the programmed altitude

Bank Angle Warn – Audible “bank angle-bank angle” is heard when the aircraft bank exceeds the degrees established via the *User Profile* settings.

Warn is GS is above 25 – Copilot will advise you if your ground speed is above the knots established via the *User Profile* settings.

Warn if IAS is above 250 – Copilot will advise you if the Indicated Air Speeds goes above 250 knots, while the aircraft is below 10,000 feet.

Manage Acft Hdg – Copilot will adjust the autopilot heading to match the aircraft heading, when the master autopilot is not engaged.

Manage Altimeter – Copilot will advise you when you pass the transition altitude, and set your altimeters to standard (29.92). On decent, the copilot will advise you when you pass TA, but **WILL NOT** set the Altimeter.

Est power during Pre-Flight – Upon connection, the Copilot will start the APU and turn the battery ON.

Raise Gear on Takeoff – Copilot will raise the landing gear once a positive rate of climb is established

Set Hdg 500 ft – After the plane passes 500 feet, the pilot calls “LNAV,” Copilot engages Heading Hold mode.

Set Alt 800 ft - After the plane passes 800 feet, the pilot calls “VNAV,” Copilot engages Altitude Hold mode.

Set Spd 1000 ft – After the plane passes 1000 feet, the Copilot adjust the IAS to 250 knots and engages the Speed Hold mode

Set Ap ft - After the plane passes the AGL established in the *User Profile* settings, the Copilot engages the master Auto Pilot.

Reset AutoBrakes – After takeoff, the Copilot resets the AutoBrakes to ZERO.

Tune ILS – If a landing runway is selected, the Copilot will tune NAV1 to the ILS frequency, once the aircraft is within 20 miles on the destination airport/

Set AutoBrakes – Copilot will set the AutoBrakes to Medium on decent, in preparation for landing.

Reset AP – Copilot will adjust the autopilot heading and altitude once the aircraft is established on the ILS/Glideslope, to prepare for a missed approach. The auto pilot heading is set to match the runway heading, the altitude is set to 4000 feet.

Disconnect AP – Copilot will disconnect the master autopilot on decent once the aircraft is below the feet (AGL) established via the *User Profile* setting.

Disconnect AT – Copilot will disconnect the auto throttle on decent once the aircraft is below the feet (AGL) established via the *User Profile* setting.

Engage Rev Thrust – Copilot engages reverse thrust on landing

Reverse Idle – Copilot pulls the throttles to idle once the aircraft passes 80 knots, on landing.

GPWS – Activates the Ground Proximity Warning System.

Call 80 kts – Copilot will call 80 knots on the takeoff roll.

ILS Calls* – CoPilot will calls “Localizer Alive,” Localizer Captured,” “Glideslope Alive,” and “Glideslope Captured” at the appropriate times.

AutoStart Checklist – After Start, Before Takeoff, After Takeoff, and After Landing checklist are initiated automatically.

After Start checklist is called with all engines are running and stable.

Before Takeoff is called when the aircraft is approaching the runway threshold (you must select the appropriate takeoff runway on the checklist tab).

After Takeoff is called with the aircraft passes 3000 feet.

In-Range Checklist is called when the aircraft is within 7 nm of the destination airport.

After Landing Checklist is called when the aircraft airspeed falls below 10 knots upon landing.

Aircraft Flap Settings – Select the corresponding aircraft flap settings. If the flap setting is not listed, select the closet value. For example, if your aircraft has a flap setting 22, select 20.

AIRPORT INFORMATION

Displays general information, satellite image, airport diagram (US only), and NOAA weather pertaining to the selected airport.

From the FSFO main screen, select **Options > Open > Airport Information**.

